



# PGP® Desktop Storage 9.9

Flexible storage encryption for distributed professionals

Part of the PGP® Encryption Platform



## Benefits

- **Easy, automatic operation** – Protects files and disks without changing the user experience.
- **Enforced security policies** – Automatically enforce data protection with centrally managed policies.
- **Accelerated deployment** – Achieves disk and network encryption using the existing infrastructure.
- **Reduced operation costs** – Result from centrally automating encryption policies.

## PGP Customer Spotlight

Sony Computer Entertainment Europe, a leading video game console and game distributor in Europe, uses PGP® Whole Disk Encryption to secure confidential financial and customer data that employees carry on mobile devices such as laptops.

## Comprehensive encryption secures data stored on laptops and desktops or shared on file servers

Mobile computers and file servers have quickly emerged as industry-standard tools for enabling user productivity and collaboration. Unfortunately, unprotected mobile devices and data pose a critical risk to an enterprise's most sensitive data. Exposure of this data can result in financial loss, legal ramifications, and brand damage.

PGP Desktop Storage provides flexible, multilayered encryption using PGP® Whole Disk Encryption to protect confidential files stored on local desktop or laptop systems and using PGP® NetShare to securely share files with selected colleagues. This approach ensures that only authorized users can access sensitive data, fulfilling partner and regulatory requirements for information partitioning and security.

### Full Disk Protection

PGP Whole Disk Encryption locks down the entire contents of a laptop, desktop, external drive, or USB flash drive, including boot sectors, system, and swap files. The encryption is transparent to the user, automatically protecting data while the system is in use, with no changes required to user behavior or workflow.

### Persistent Policy-Enforced File Encryption on Network Servers for Collaborating Teams

PGP NetShare extends file server access controls to include strong end-to-end encryption, allowing content owners or security administrators to specify access rights for specific groups or individuals. Authorized users save and share files on file servers and continue to use all applications as before. Content such as documents, spreadsheets, and presentations is automatically encrypted when saved to a PGP NetShare-protected folder.

### PGP Encryption Platform-Enabled

PGP Desktop Storage is a PGP Encryption Platform-enabled application. The PGP Encryption Platform provides a strategic enterprise encryption framework for shared user management, policy, and provisioning, automated across multiple, integrated encryption applications. As a PGP Encryption Platform-enabled application, PGP Desktop Storage can be used with PGP Universal™ Server to manage existing policies, users, keys, and configurations, expediting deployment and policy enforcement. PGP Desktop Storage can also be used in combination with other PGP encryption applications to provide multiple layers of security.

## Easy, Automatic Operation

Once PGP Desktop Storage is deployed, its operation is completely transparent—users simply continue to work as usual. The software automatically encrypts and decrypts documents on the user's drive and in protected folders, ensuring that users never forget to secure data stored locally or shared over a network.

- **New: Expanded international keyboard support** – Use over 30 international keyboards in pre-boot authentication.
- **Single sign-on** – Provides simplified login experience using existing Windows' password.
- **Encryption that follows the file** – Ensures that files stay encrypted locally, over the network, on the server, and in backups.

## Enforced Security Policies

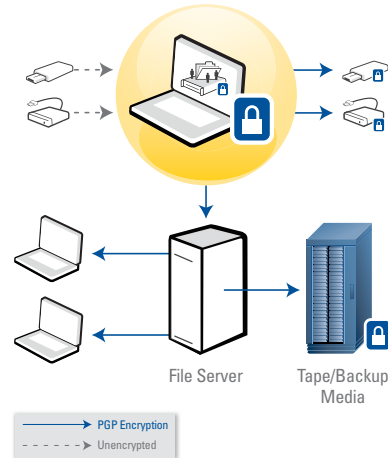
Security policy configured in PGP Universal Server ensures that data is encrypted, defending data stored on desktop or laptop systems or shared across a network.

- **Client controls** – Enable the organization to better meet security requirements by locking down which features are enabled, visible to the user, and enforced.
- **Status logging & reporting** – Tracks and reports on the state of protection in the organization to satisfy regulatory requirements and help prevent a data breach.
- **Strong authentication options** – Perform pre-boot authentication using smart cards such as the RSA SID800.

## Accelerated Deployment

Used together, PGP Desktop Storage and PGP Universal Server's unified management console establish, enforce, and update security policy in real time. This combination reduces the time and effort required to deploy encryption of stored and shared data.

PGP and the PGP logo are registered trademarks of PGP Corporation. Product and brand names used in the document may be trademarks or registered trademarks of their respective owners. Any such trademarks or registered trademarks are the sole property of their respective owners.



Defend local data and files shared over the network.

## Reduced Operation Costs

With PGP Desktop Storage, no special training is required for end users. This approach accelerates deployment time, reduces training costs, and avoids any increase in help desk calls.

- **Flexible, scalable security** – Allows PGP NetShare to scale to include thousands of users without degrading system, server, or network performance.

## PGP Universal Server Management

PGP Desktop Storage can be centrally deployed and managed when used with PGP Universal Server (optional), enabling organizations to easily set and enforce data security policies throughout the enterprise.

- **Centrally enforced security policy** – Automatically enforces protection of sensitive data, devices, and email using security policies driven by an existing corporate directory.
- **Extensible protection** – Allows management of PGP® Desktop Email or any other PGP Encryption Platform-enabled application.

## Technical Specifications

PGP Desktop Storage supports Windows Vista (all 32- and 64-bit editions), Windows XP (32- and 64-bit editions), and Windows 2000 Professional (SP4). For complete technical specifications, please visit [www.pgp.com](http://www.pgp.com).



PGP Corporation  
[www.pgp.com](http://www.pgp.com)

PGP Corporate Headquarters  
Tel: +1 650 319 9000

PGP (GB) Ltd.  
Tel: +44 (0)20 8606 6000

PGP Deutschland AG  
Tel: +49 69 838310 0

PGP Japan K.K.  
Tel: +81 03 4360 8308

© 2008 PGP Corporation  
DTSTORDS080918